

# ALL ABOUT THE BMETS

Looking to move into the HTM industry as a Biomedical Technician? Here's everything you need to know about the industry, the role, and the ideal candidate.

## PREP FOR YOUR CAREER



### EDUCATION

Associate's degree in biomedical technology or engineering.

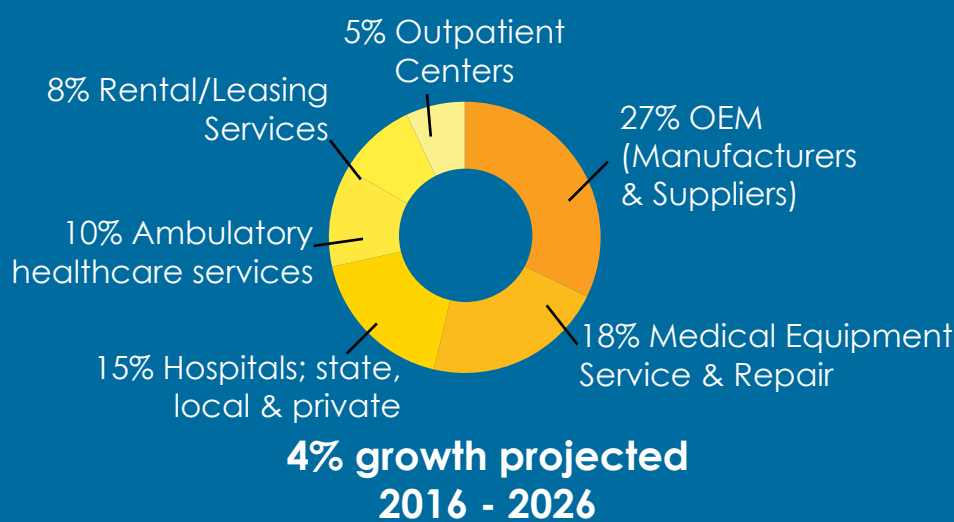
Certification as CBET or CHTM

On-the-job training

OEM training courses



### JOB OUTLOOK



### SALARY RANGE

**\$29.5k to \$80.4k**

MEDIAN  
\$48,820



### THE WORK

- Install test and calibrate parts and equipment
- Repair and replace parts
- Perform preventive maintenance and service
- Keep records of maintenance and repairs
- Explain and demonstrate how to operate medical equipment
- Manage replacement of medical equipment

## DO YOU HAVE WHAT IT TAKES TO BECOME A BIOMEDICAL TECHNICIAN?

#### CREATIVE MIND

A BMET should be able to think "outside the box" while troubleshooting. To go beyond basic "Tab A fits Tab B" to fully diagnose the "why" of a malfunction or breakdown.

#### EAGLE EYE

Working with medical equipment requires hyper focus and attention to detail. BMETs should focus on precision and accuracy when completing diagnostics and repairs.

#### HEART OF GOLD

BMETs understand that medical equipment affects overall patient care. They place the care and dedication in their work to ensure overall patient safety.

#### SHARP TONGUE

A BMET should be able to speak knowledgably and effectively to explain how they complete their work to both their customers and to colleagues.

#### TECHNODEXTEROUS

A BMET should be proficient with multiple forms of technology (computers, tablets, smart phones) for research, reporting, and communication purposes. This also includes being knowledgeable with test equipment.

#### TOOLS OF THE TRADE

A well equipped BMET is a prepared BMET. A BMET should ensure a well stocked supply of basic hand tools, common test equipment, and parts within easy reach to reduce downtime. Many recommend a small toolkit to be carried to every service call.

